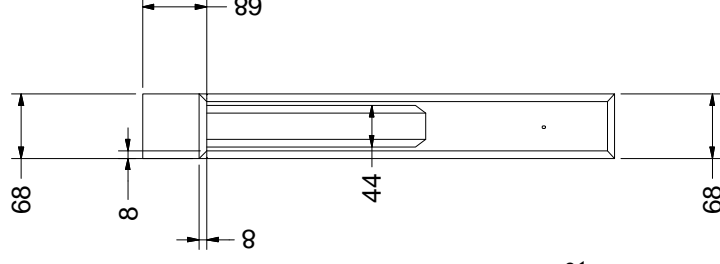
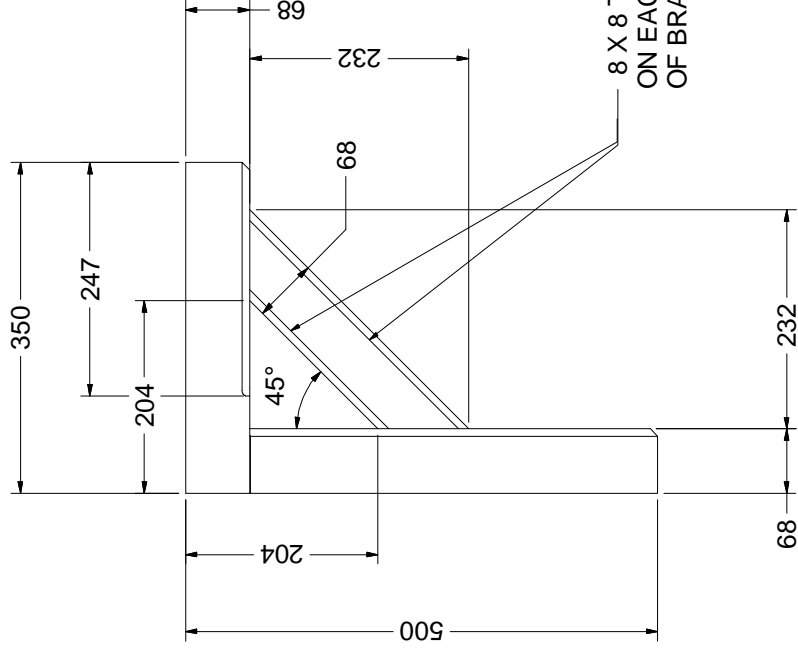
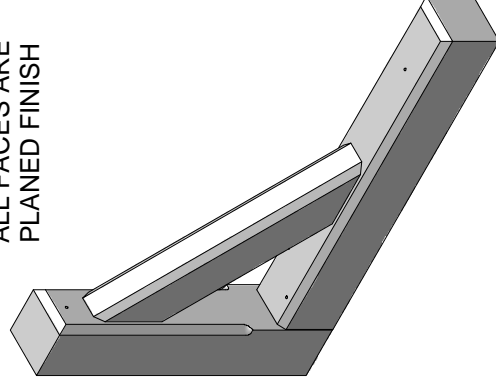
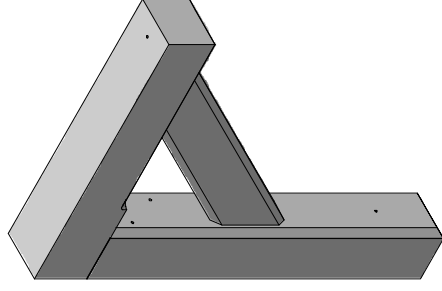
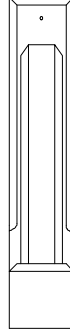
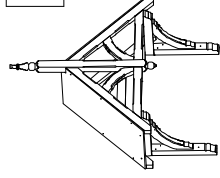


— 8 X 8 THROUGH CHAMFER
ON EACH EDGE
OF BRACE



ALL FACES ARE
PLANED FINISH


$$\text{SWL (Safe Working Load)} = 199 \text{ Kg}$$


HEAD AND UPRIGHT- EX 75mm X 75mm
BRACE - EX 75mm X 50mm

TITLE GALLOWS BRACKET G2

Canopy Products Ltd
Blackwood Mill
Blackwood Road
Bacup, Lancs, OL13 0PZ
Tel 01706 82 2665
Fax 01706 82 3333

MATERIAL	EUROPEAN RED DEAL V
TREATMENT	DIP TREATED WITH GLASURIT GLASSOXYD NATURA BASE COAT FUNGGICIDE STAIN
SCALE	DRN R. SPENCER
DRG. No.	DATE 24/06/2008

F-G2